

**RICOH**  
imagine. change.



# Small Footprint, Big Impact

High Performance in a Sustainable and Compact Design

Bring the power of smarter printing and sustainability to every corner of your workplace with the **RICOH IM C320F**.

A4 Laser Colour  
Multifunction Printer

**IM C320F**

Print • Copy • Scan • Fax

# Smart Solutions for Agile Offices

Enhance your organisational workflows with the IM C320F. Compact yet feature-rich, the IM C320F integrates seamlessly into the modern digital workplace, enabling you to optimise workflows, strengthen data security, and minimise environmental impact.

With an easy setup, vivid colour output, and integrated solutions support in a small package, the IM C320F brings high quality colour print, copy, scan, and fax capabilities to wherever you need it.



## A Perfect Fit

### Print Where You Need It

We've made the IM C320F significantly smaller than our previous models, so it fits perfectly in virtually any compact workspace where it's needed—from small office rooms to retail shops and frontline counter services. Build your workflows around your people, not your printer.



## Smart And Secure

### Stay Secure With Scalable Intelligence

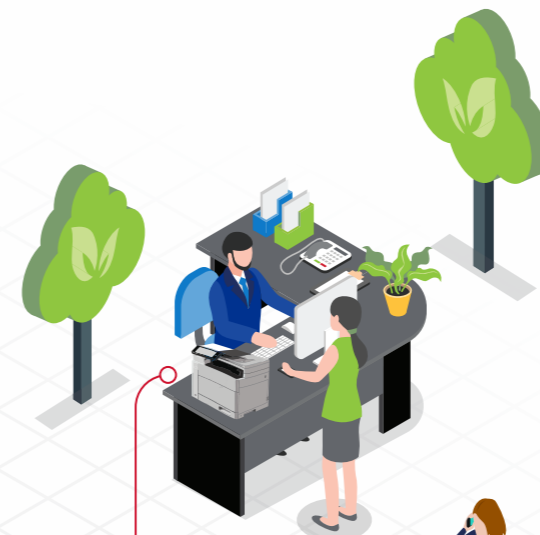
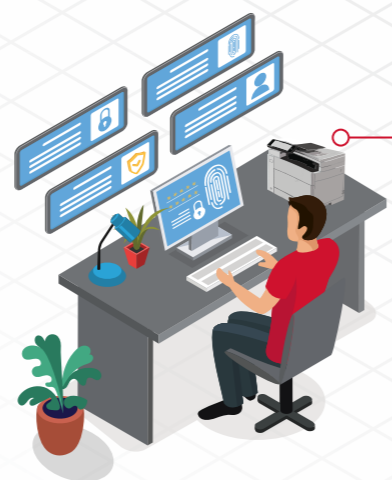
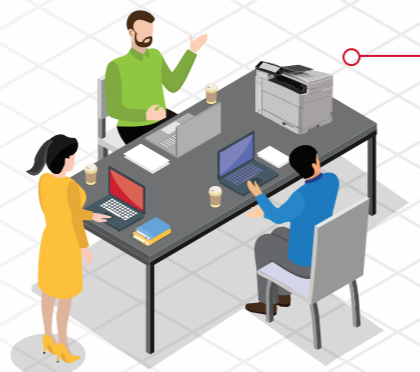
Built-in user authentication, support for third-party card authentication solutions, and more help the IM C320F keep your data secure.

And as security threats and your business needs evolve over time, you can depend on RICOH Always Current Technology to keep you covered, allowing you to download the latest essential features and security updates as they become available.

## i

### KEY FEATURES

- Print/copy speed of 32 pages per minute
- Enhanced digital workflows with RICOH Smart Integration solutions
- Automatic feature and security updates with RICOH Always Current Technology
- User-friendly and responsive 7" Smart Operation Panel
- Energy efficient with low-melt toner and class-leading TEC value
- Eco-friendly design with 50% post-consumer recycled plastic and 31% reduced plastic packaging
- Built-in user authentication and latest data network security standards



## Sustainable Operational Excellence

### Positive Impact for Business and the Environment

Combining energy saving technology with eco-conscious design, the IM C320F enables you to support a greener future while improving your bottom line. Enhanced thermal efficiency, low-melt toner, and class-leading TEC value reduce energy consumption and carbon emissions, cutting both costs and your carbon footprint.

Built with 50% post-consumer recycled plastic, the IM C320F embodies Ricoh's industry-recognised\*, market-leading approach to sustainability. We've significantly reduced single-use plastic in our packaging by 31% and eliminated it entirely from our toner cartridge packaging.

*\*Ricoh is included in TIME World's Most Sustainable Companies of 2024, Corporate Knights' Global 100 Most Sustainable Corporations 2024, and Financial Times and Statista's Asia-Pacific Climate Leaders 2024 lists.*



## Effortless Workplace Integration

### More Than a Single Solution

Sharing the same platform and interface of Ricoh's A3 IM C Series MFPs, the IM C320F integrates seamlessly into your print environment, simplifying print on-demand workflow creation and device management across A4 and A3 devices.

Enhance the versatility of your new IM C320F with advanced cloud services and automated workflow solutions for improved efficiency, reduced costs, and enhanced security.

**Partner with Ricoh for total solutions that address your unique challenges and priorities.**

### Tap Into Your New Print Capabilities



Take your print infrastructure to new heights and optimise workflows, foster effortless collaboration, and enhance efficiency with Ricoh's suite of digital services and solutions.



#### Workflow & Automation

- Process Automation
- Content and Collaboration
- Business Applications

Reduce errors, accelerate processes, and automate complex manual workflows to uncover new opportunities for growth and expansion.



#### RICOH Smart Integration

- RSI Connectors
- RSI Control
- RSI Control+
- RICOH CloudStream

Streamline document workflows, enhance security, and simplify print device management with a unified cloud-based platform.

# Range Summary



General	IM C320F	M C320FW	P C375
<b>Functions</b>	Copy, print, scan, fax	Copy, print, scan, fax	Print
<b>RICOH Smart Integration</b>	✓	—	—
<b>RICOH Always Current Technology</b>	✓	—	—
<b>Paper Input (Standard + Bypass)</b>	250 + 50 sheets	250 + 50 sheets	250 + 50 sheets
<b>Paper Input (maximum)</b>	800 sheets	800 sheets	1,300 sheets
<b>Copy/Print Speed</b>	32 ppm	32 ppm	32 ppm
<b>First Print Time (B&amp;W/Colour)</b>	3.6/4.8 seconds	7.4/8.4 seconds	4.1/5.3 seconds
<b>Scan Speed (simplex/duplex)</b>	30/60 ipm	30/42 ipm	—
<b>Operation Panel</b>	7" Smart Operation Panel	4.3" colour touchscreen	4-line LCD
<b>Print Resolution</b>	1,200 x 1,200 dpi	600 x 600 dpi	600 x 600 dpi
<b>Power Consumption (Sleep Mode)</b>	0.58 W	0.61 W	0.53 W
<b>Typical Electricity Consumption (TEC)</b>	0.30 kWh	0.33 kWh	0.30 kWh
<b>Weight</b>	29.9 kg	29.9 kg	25 kg
<b>Dimensions</b>	410 mm x 429 mm x 483 mm	410 mm x 429 mm x 483 mm	410 mm x 429 mm x 360 mm
<b>Average monthly volume</b>	7,500 prints/month (max)	7,500 prints/month (max.)	7,500 prints/month (max.)
<b>Duty Cycle</b>	75,000 prints/months	75,000 prints/months	75,000 prints/months
<b>Estimated life</b>	5 years or 450,000 output	5 years or 450,000 output	5 years or 450,000 output

## Reimagine your workspace with RICOH

Ricoh's intelligent MFPs redefine the boundaries of your workspace. With flexible access to vital document processes, these devices ensure your productivity isn't limited to a single location.

To learn more, visit [www.ricoh.co.th](http://www.ricoh.co.th)

