

Work Inspection Camera

RICOH SC-20

RICOH
imagine. change.



Prevent Work
Errors

Real-time
Inspections
During Works

High-precision
Judgment

8 Megapixel
Sensor

Traceability
Image Log
Storage

Compatible with
a Wide Range of
Workpiece Sizes
C-mount
FA Lens

Cannot conduct exterior inspections.

This camera is for manual work quality inspections.

The RICOH SC-20 is a work inspection camera that detects mistakes during the assembly process. It can conduct real-time quality checks during a work, something exterior inspection cameras are not capable of. It can perform automatic checks of assembly status such as similar parts, missing parts, and work order, and perform batch inspections after a work is completed. Because the system is easy to set up without the need for a computer, it is easy to begin digital inspections.

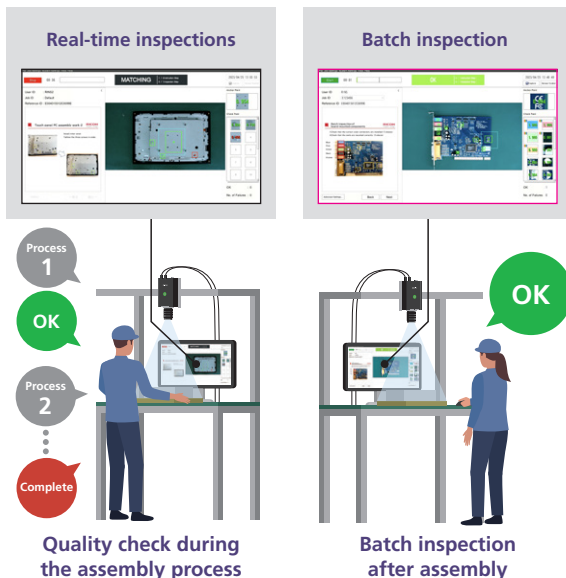
Work Inspection Camera **RICOH SC-20**

Digital image inspections during or after a work

01

Image recognition automatically checks assembly status during the work. Digitalization of visual inspections helps maintain consistency. You can set up to 20 check points and perform batch inspections after a work is completed.

Digitalization of visual inspections helps maintain consistency



Easy installation without the need for a computer

02

The camera, image recognition, and software are integrated. The system is easy to set up if you have a mouse, keyboard, and monitor. If you have a touch panel monitor, you don't need a mouse or keyboard.

Easy setup with a monitor and camera only



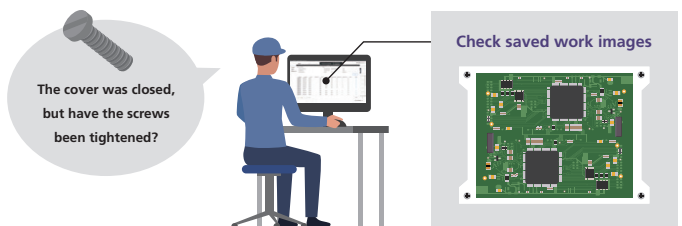
* The RICOH SC-20 main unit is not provided with a lens. A genuine RICOH C-mount lens compatible with the RICOH SC-20 must be purchased separately.

Ensure traceability

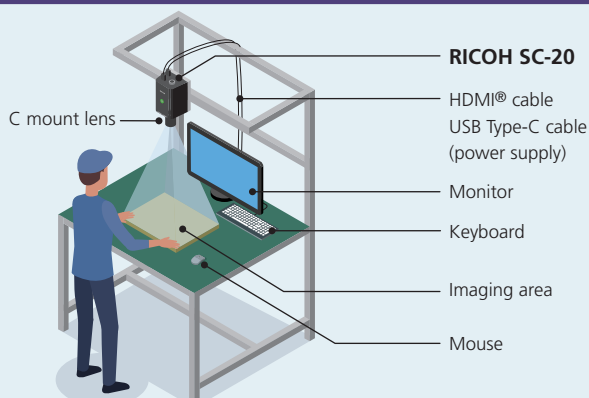
03

Part serial numbers, work times, etc., and inspection results such as OK/FAIL can be saved as image logs for use in work analysis and traceability.

Logs can be viewed for work tracing

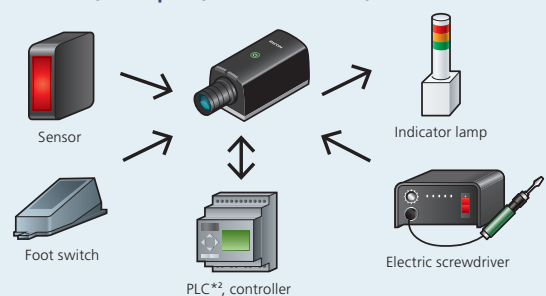


System Configuration



* A mouse and keyboard are not necessary when using a touch panel monitor.

Easily connect to external devices using the external connector, LAN port, wireless LAN*, or Bluetooth®*1



*1 Wireless LAN and Bluetooth are supported only on the models with a wireless communication system.
*2 Programmable Logic Controller

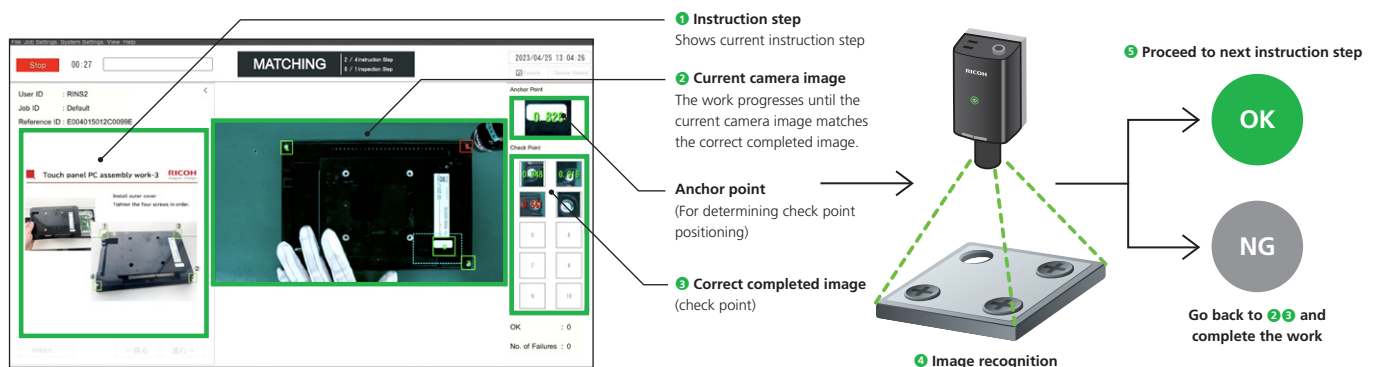


Compatible with C-mount FA lenses and a wide variety of workpiece sizes and focal lengths

The camera uses an interchangeable C mount lens. 5 high-resolution, RICOH FA lens focal lengths that offer minimal distortion are available. Select from 5 focal lengths to match the size of your workpiece.

Real-time inspections during a work

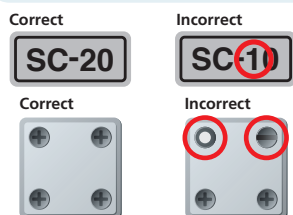
Instruction steps are linked with image recognition. The worker follows the instruction steps displayed on the left side of the screen and the system uses image recognition to automatically check that the work has been carried out in the correct order, including screw tightening, etc. The system prevents the worker from proceeding to the next step in the process until the camera image matches the completed image, helping prevent mistakes and improve quality. The system helps workers learn proper work procedures.



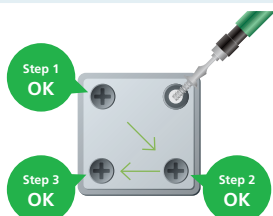
Prevent mistakes with image recognition (matching)

Pattern matching checks product numbers and similar parts with slightly different shapes, and checks for missing parts. Color recognition can detect differences in color among similar parts to ensure that they are assembled in the correct orientation. Image recognition can also differentiate between smooth and uneven surface materials such as non-woven fabric, sponge, ensuring that they are attached to the product.

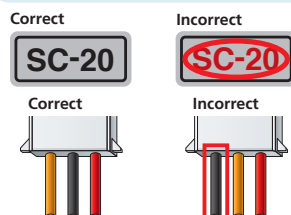
Check for similar or missing parts



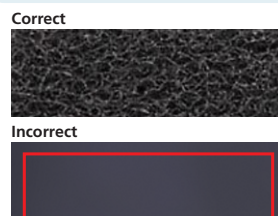
Work order



Color check

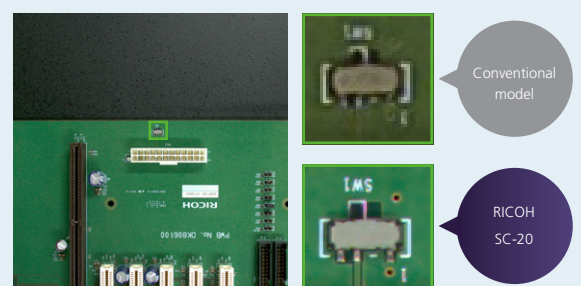


Texture check



High-precision judgments thanks to 8 megapixel high-resolution imaging

This camera is equipped with a 1/1.8 inch, 8 megapixel CMOS color sensor. High-precision inspection thanks to high-resolution digital imaging enables checks of minuscule differences not detectable by the human eye.



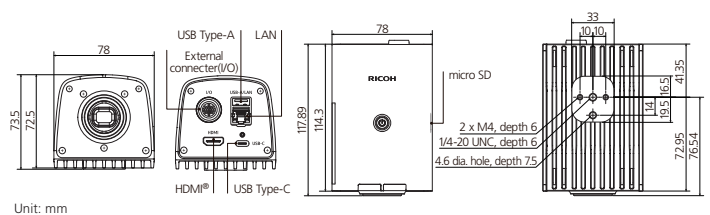
RICOH SC-20 Main Specifications

Item		Specifications	
Lens mount		C-mount (The RICOH SC-20 main unit is not provided with a lens. A genuine RICOH C-mount lens compatible with the RICOH SC-20 must be purchased separately.)	
Image sensor		1/1.8 inch 4K (QFHD) progressive color CMOS	
	Number of pixels	3840 (H) x 2160 (V)	
	Cell size	2.0 (H) x 2.0 (V) μm	
Instruction step	Instruction step file	JPG format (610 (H) x 680 (V))	
Matching	Method	Shape, color, texture	
	Area setting (ROI)	Specify area with absolute position	
	Position correction	Relative position correction from reference position	
	Position rotation correction	±180° (shape only)	
	Number of simultaneous registrations	Maximum 20 places	
Data input	Number of characters check	Check whether matches set number of characters	
	Character string check	Check whether matches set character string on left	
Result logging	Output method	Saved in CSV format to the specified path	
	Log information	Work ID, reference ID, user ID, instruction step, inspection step, date/time, standard time, elapsed time, process item, judgment result, final judgment result, image log file name, process data	
Image logging	Output method	Saved in JPG format to the specified path	
	Setting method	Image logging can be enabled or disabled for each inspection step.	
External interfaces	HDMI	1920 (H) x 1080 (V)/60 Hz * Voice output is not supported.	
	USB	Type-A x 1: USB 3.0 Super Speed supported (Host) Type-C x 1: USB 3.0 Super Speed supported (Host) USB PD supported, USB DP Alt Mode not supported * Supported class: USB-HID, USB-Mass Storage, USB-Audio	
	Ethernet	RJ-45 x1 100Base-TX / 1000Base-T	
	microSD card	microSD / SDHC / SDXC x1 High Speed / UHS-I supported	
	External GPIO	OUT (insulated): 6 pieces IN (insulated): 10 pieces OUT/IN (insulated) power: 5 V to 24 V ±10%	
	Wireless LAN (Models with a wireless communication system only)	IEEE802.11a/b/g/n/ac (2.4 GHz/5 GHz) compliant	
	Bluetooth (Models with a wireless communication system only)	Bluetooth 5.0 BR/EDR Class 2 * Supported profile: SDP, L2CAP, GAP, A2DP, HID	
I/O	Buzzer	Electromagnetic (Volume: high, low, mute)	
	LED indicator lamps	Power, OK, FAIL	
	Switch	Power	
Ratings	Power voltage	12 V DC ±10% 3A or more (USB PD) 12/24 V DC ±10% (external connector) * Power must not be supplied from both connectors at the same time.	
	Power consumption	8.6 W or less	
Storage area	Area accessible by user	25 GB	
Environmental resistance	Operating temperature range	0 to 40°C	
	Storage temperature range	-20 to +60°C	
	Ambient humidity range	30 to 80% RH * No condensation	
External dimensions		78 (W) x 73.5 (H) x 117.9 (D) mm (excluding attached lens and connectors)	
Weight		Approx. 460 g	
Mounting holes		Tripod screw hole (ISO 1222 compliant), M4 screw hole x 2	
AC adapter (models including an AC adapter only)	Product name		D-AC166-SC
	Manufacturer		Adapter Technology Co., Ltd.
	Ratings	Input voltage	100 to 240 V AC / 50 to 60 Hz
		Output voltage	+12 V ±5%
		Output current	3 A max.
	External dimensions		33 (W) x 50 (H) x 99 (D) mm (excluding cable)
	Weight		Approx. 210 g

● RICOH SC-20 Work Instructions Editor (PC software) recommended operating conditions

This PC software is used to create instruction step files optimized for the RICOH SC-20.
 [Supported OS] Windows® 10 (32-bit/64-bit) Ver. 1607 and later, Windows® 11 (64-bit)
 [Software requirements] Microsoft® .NET Framework 4.8 or later version package and a version of one of the following Microsoft® Office applications (Microsoft® Office: Word, PowerPoint®, Excel®) installed
 [Hard drive space] 1.0 GB or more
 [Display] 1024 x 768 or higher screen resolution

● RICOH SC-20 exterior dimension drawing



* Note that the information shown here is subject to change without notice. * Product coloring shown here may differ from the actual product due to printing limitations. * HDMI is a trademark or registered trademark of HDMI Licensing LLC.
 * Ethernet is a registered trademark of FUJIFILM Business Innovation Corp. * Microsoft, Windows, Excel, PowerPoint, and Word are the registered trademarks or trademarks of the Microsoft Corporation in the United States and/or other countries.
 * IEEE is a trademark of The Institute of Electrical and Electronic Engineers, Inc. * Bluetooth is a trademark or registered trademark of Bluetooth SIG Inc. in the United States and other countries. * Other company and product names are the trademarks or registered trademarks of their respective owners.

For safe product use	*Carefully read the user guide and use the product correctly. *Use the correct power supply and voltage as indicated.
	*Do not install or use the products in locations with excessive water, humidity, steam, dust, smoke, etc.

RICOH
 imagine. change.

RICOH (THAILAND) LIMITED Head Office

341 Onnuj Road, Prawet, Prawet, Bangkok 10250 Thailand

02-088-2305 rthims@ricoh.co.th RICOH Thailand Barcode Solution www.ricoh.co.th

